

--	--	--

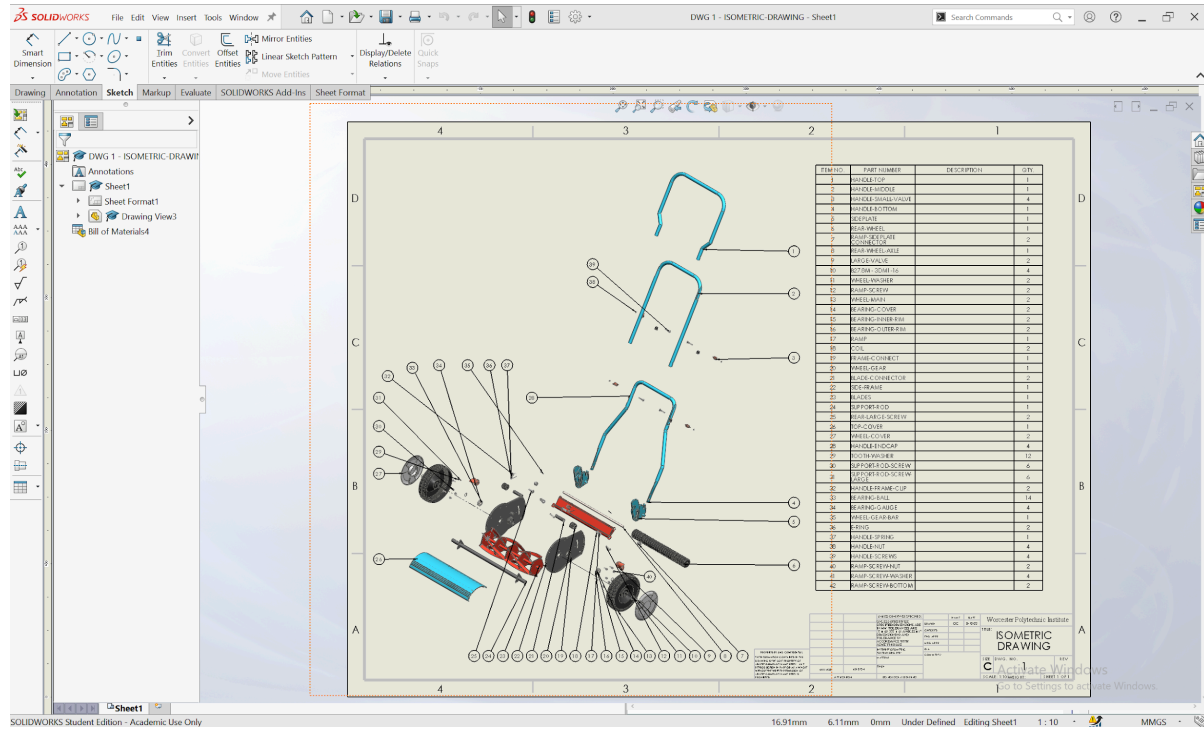
# Lawnmower Artifact Dissection

Oliver Chang // August 12, 2022

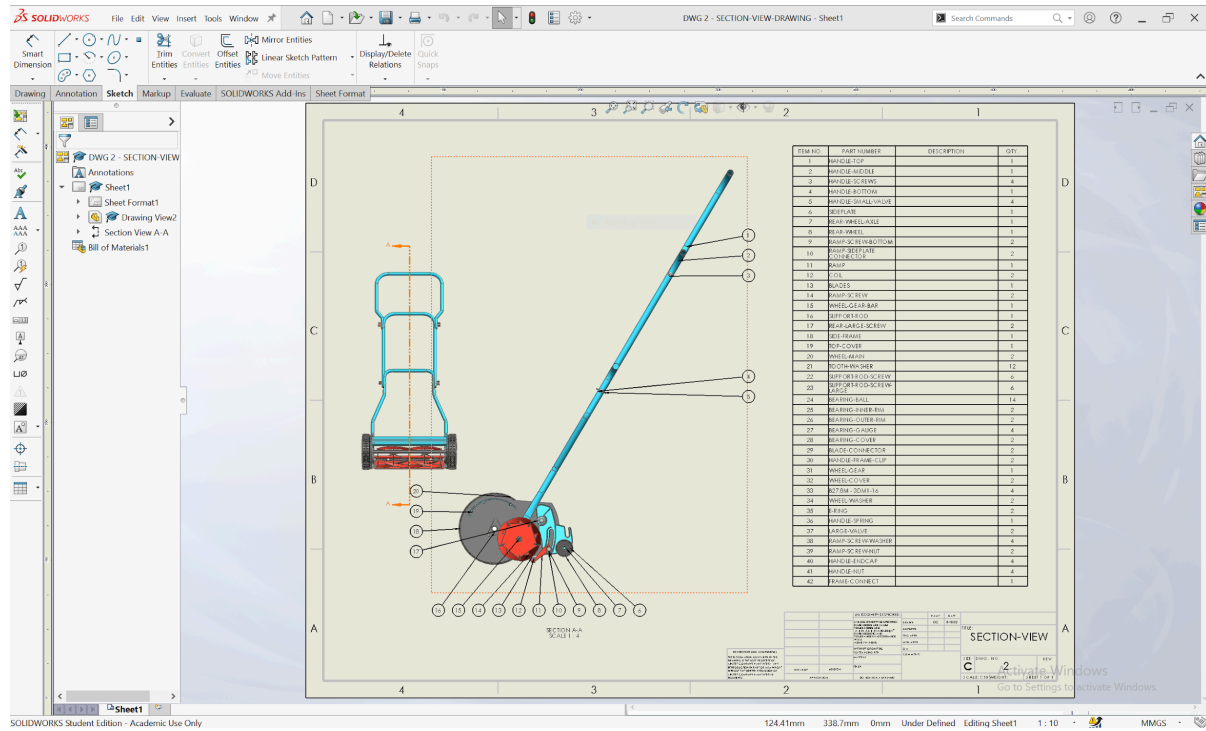
--	--	--

# Drawings

## Isometric Drawing



## Section View Drawing



--	--	--

## Appendices

### Assembly-Disassembly Instructions

1. Remove the wheel covers using the rectangular divot and a screwdriver
2. Remove the retaining ring and washer that holds the wheel in place. This allows you to remove the wheel, wheel-gear, and inner retaining ring.
3. Unscrew the large valve, ramp screw, and connector screw to remove the rear-assembly. This allows you to remove the side plates, ramp, coils, rear wheels, and rod
4. Unscrew the screws connected to the frame to remove the top cover and support rod. You can now also dis-assemble the blade and connector piece.
5. To disassemble the handle, remove the E-Ring and clip that hold the handle in place. After removing the handle, there is a coil/spring that is hooked onto the frame. By angling it, it will slide out.
6. Remove the small valves and screws that hold the handle parts in place. Afterwards, remove the black cap pieces on the middle and top handle parts.

### Reference Images

--	--	--



--	--	--



--	--	--



--	--	--

